

LAVALIER MIC SET

ew D1-ME2

evolution wireless D1

FEATURES

- Unobtrusive professional clip-on microphone
- Up to 15 compatible channels (under optimal conditions) in license-free 2.4 GHz band
- Automatic frequency management
- Prevents interference: Intelligent channel back-up allows co-existence with Wi-Fi & Bluetooth
- Audio effects: equalizer, de-esser, automatic gain control
- iOS & Android app for remote control and monitoring of the system
- Rugged metal housing



DESCRIPTION

HD Live sound and highest range: the digital D1 LAVALIER MIC SET operates in a license-free 2.4 GHz band and can be monitored via remote control iOS and Android app. Intelligent channel back-up allows co-existence with Wi-Fi and Bluetooth. The system comes in a rugged transport case consisting of an EM D1 1/2 19" rackmount receiver, a lightweight SK D1 bodypack transmitter, an unobtrusive clip-on microphone for excellent speech intelligibility, power supply, battery holder and 2 AA batteries.

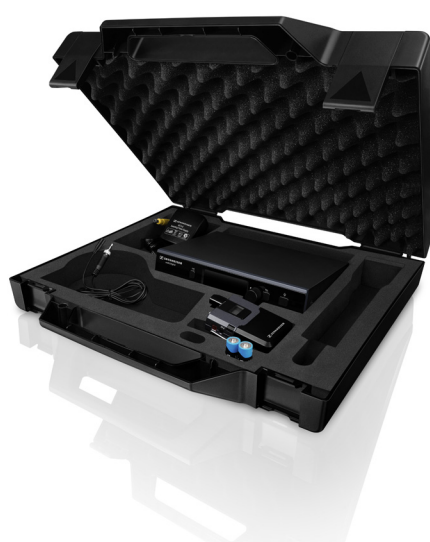
TECHNICAL DATA

SYSTEM

| | |
|----------------------------------|---|
| AF frequency response | 20 to 20.000 Hz |
| Dynamic range | > 135 dB (A) |
| THD (1 kHz) | typ. < 0,1 % |
| Audio sampling | 24 bit/48 kHz |
| Signal-to-noise ratio | ≥ 105 dB (A) |
| RF frequency ranges | 2,400 to 2,483.5 MHz |
| Modulation | GFSK with back channel |
| Transmission method | TDMA |
| time diversity | |
| frequency diversity | |
| fast switching antenna diversity | |
| Latency | 3.9 ms |
| Audio codec | APT-X Live |
| Temperature range* | relative air humidity max. 95 % Operation: – 10 °C to +55 °C Storage: – 20 °C to +70 °C |

* The temperature range is influenced by the battery characteristics

Continued on page 2



SCOPE OF SUPPLY

- EM D1 rackmount receiver
- SK D1 bodypack transmitter
- ME 2 clip-on microphone
- Power supply
- Battery holder
- 2x AA batteries
- Transport case
- User manual

RECOMMENDED ACCESSORIES

- GA 4 rackmount kit for EM D1
- BA 30 rechargeable battery pack for SK-D1
- CHG-2 charging unit for SKM D1 and SK-D1

TECHNICAL DATA

SK D1

RF output power100mW/adaptive or 10mW
(country-specific)

AF frequency response

Mic50 to 20,000 Hz

Line.....20 to 20,000 Hz

Max. input level

Mic2.2 V RMS

Line.....3.3 V RMS

Line input impedance1 MΩ

Input sensitivityautomatic sensitivity adjustment

Power supply

Batteries2 x AA size battery (1,5V)

Accupack*BA 30 (Li-Ion, 3.7V)

Operating time

Batteriestyp. 6 h

Accupack*typ. 11 h

AF connection socket3.5 mm jack socket, lockable

Weight (w/o batteries)approx. 85 g
* optional accessory

EM D1

RF sensitivity<-90 dBm

RF output powerback channel 10 mW/100 mW
(country-specific)

Audio output level gainMic/line level switch -24 dB/0 dB
XLR, balanced max +18 dBu
Jack, unbalanced/balanced max
+12 dBu/max +18 dBu

Audio effects

Low cut-3 dB at 120 Hz

Equalizer7-band graphic equalizer

De-essermulti-frequency targets

Automatic gain control (AGC)compression/expansion with auto-
matic make-up gain function

DisplayOLED

AF connection socketsXLR/1/4" (6.3 mm) jack

Antenna sockets2 x Rev-SMA

Network socketRJ45

Network protocolMedia Control Protocol
TCP/IP IPv4 (DHCP, Manual)/IPv6

Power supply12 V DC hollow jack

Current consumption350 mA

Weightapprox. 824 g

MICROPHONE

ME 2

Microphone type pre-polarized condenser

Sensitivity 20 mV/Pa

Pick-up pattern omni-directional

Max. SPL 130 dB SPL

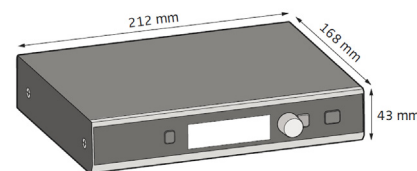
CONNECTIONS

EM-D1

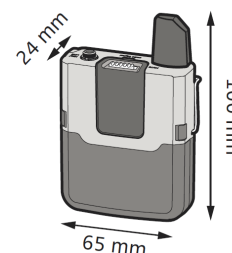


DIMENSIONS

EM D1



SK D1



PRODUCT VARIANTS

505800 ew D1-ME2-H-EULavalier Mic Set, 10mW

505809 ew D1-ME2-H-UK.....Lavalier Mic Set, 10mW

505820 ew D1-ME2-NH-USLavalier Mic Set, 100mW

505840 ew D1-ME2-NH10.....Lavalier Mic Set, 10mW

506148 ew D1-ME2-NH-NTLavalier Mic Set, 100mW